

INSTRUCTIONS FOR CAGES WITH A BASE EDGE OR HORIZONTAL WIRE

(See other side for cages without a base edge)

Note: For larger than 25"x25" use connectors supplied.

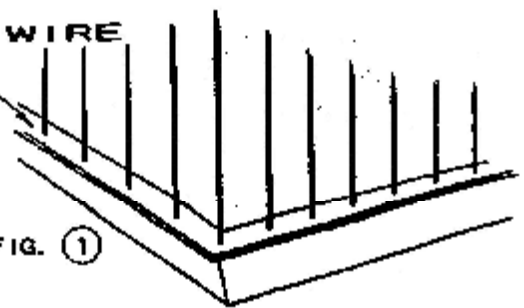


FIG. ①

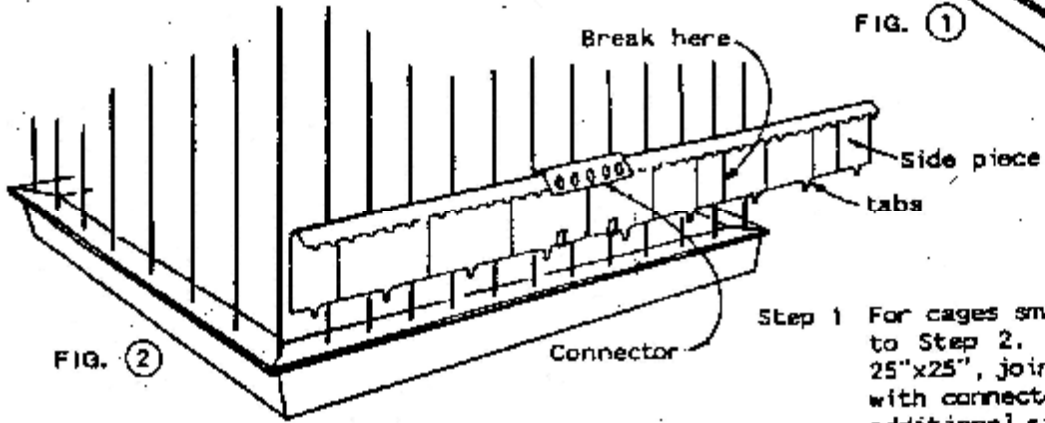


FIG. ②

Step 1 For cages smaller than 25"x25", skip to Step 2. For cages larger than 25"x25", join together two side pieces with connector, Fig. 2. Repeat with additional side pieces and connectors for all sides longer than 25". Push clips onto overlapping points. See Fig. 3 and Fig. 5.

Step 2 Position side piece against cage, Fig. 2, and locate groove nearest to corner. With top smooth side facing you, grip side with two hands and thumbs at either side of groove, on opposite side from groove. Bend towards you, then back and forth to break off. Repeat with 4 sides.

Step 3 Assemble 4 corners and 4 side pieces by pushing sides into corners 2 notches only and push clips onto overlapping points, see Fig. 3 and Fig. 5.

Step 4 Place assembled skirt down over cage, if a tab interferes with a wire, break tab off by bending down. Push side pieces into corners to fit snugly around cage and rest on base edge or horizontal wire, Fig. 4.

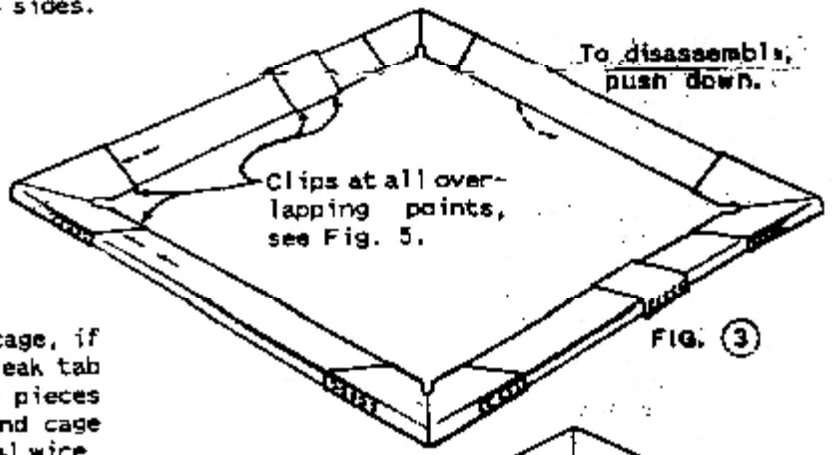


FIG. ③

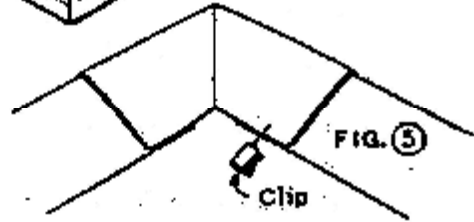


FIG. ⑤

Note! To disassemble, remove clips and push bottom of side down away from corner, see Fig. 3.

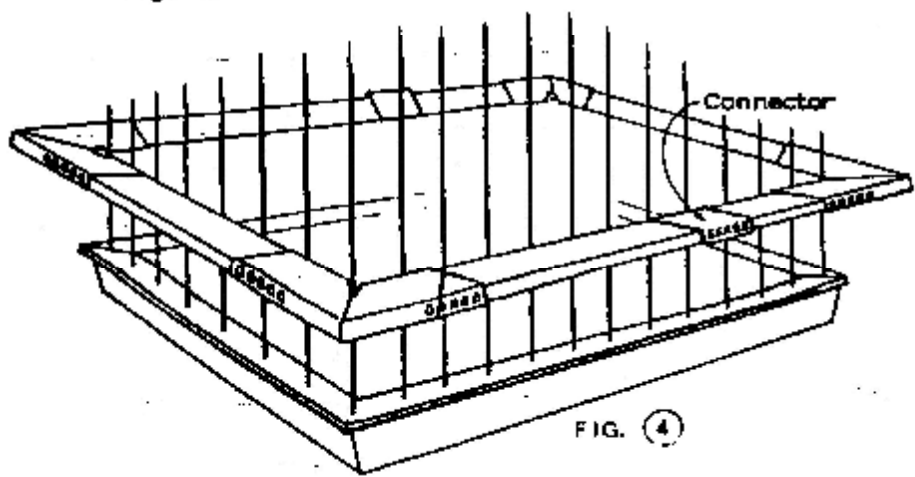


FIG. ④

Marraco, Inc.
P.O. Box 7242
Canton, Ohio 44705

U.S. Pat. Pend.

INSTRUCTIONS FOR CAGES WITHOUT A BASE EDGE

(See other side for cages with a base edge)

Note: For larger than 25"x25" use connectors supplied.

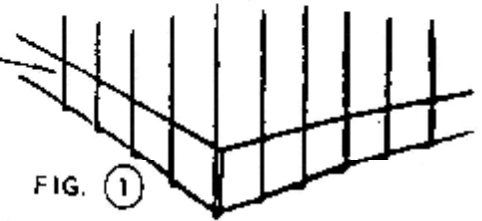


FIG. 1

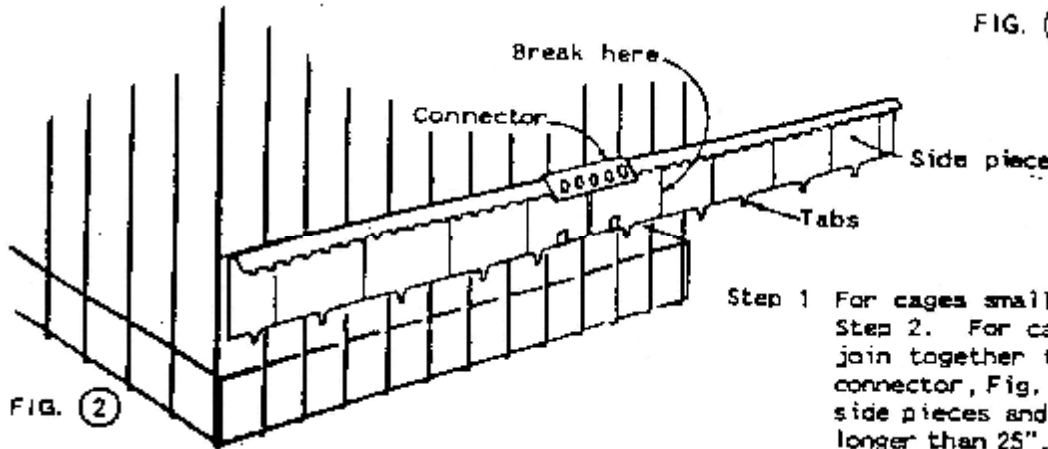


FIG. 2

Step 1 For cages smaller than 25"x25", skip to Step 2. For cages larger than 25"x25", join together two side pieces with one connector, Fig. 2. Repeat with additional side pieces and connectors for all sides longer than 25". Push clips onto overlapping points, see Fig. 4 and Fig. 5.

Step 3 If all tabs will not fit between wires, break tab off by bending down. At least two tabs are needed on each side for cages more than 25" per side.

Step 4 Assemble 1 short side and 2 corners to fit cage end snugly, Fig. 3, and push clips on overlapping points, see Fig. 4 and Fig. 5, make another assembly for opposite end.

Step 5 Position long side piece at angle against long cage side, Fig. 4 at point "A", with other hand push corner assembly, from Step 4, into side piece 2 or 3 notches. At opposite side, position remaining side at angle against cage with other hand, join corner at point "B" and push together snugly; now push corner and side at point "A" together snugly and push clips on overlapping points, Fig. 4. Repeat with remaining assembly at points "C" and "D".

Step 2 Position side piece against cage, Fig. 2, and locate groove nearest corner. With top smooth side facing you, grip with two hands and thumbs at either side of groove on opposite side from groove. Bend towards you, then back and forth to break off. Repeat with 4 sides.

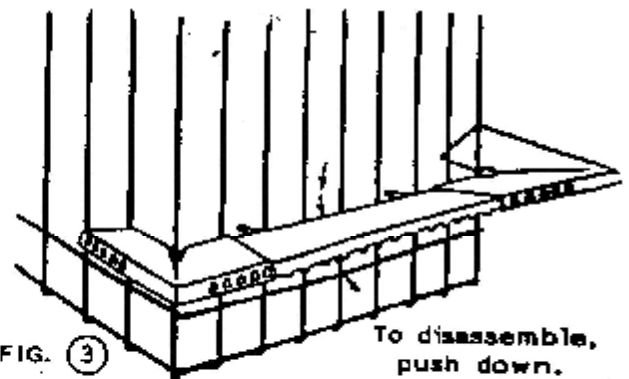


FIG. 3

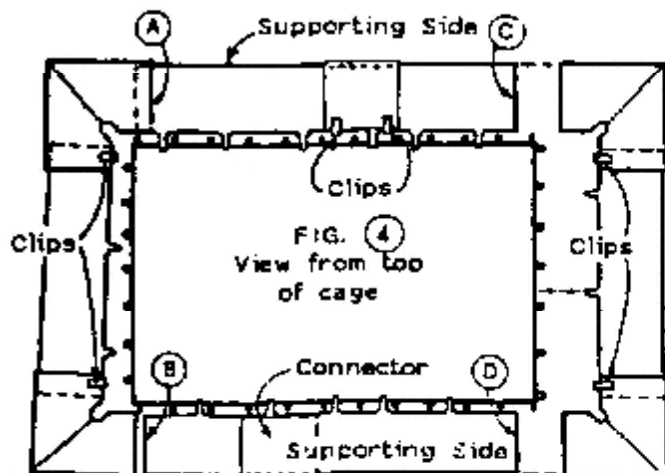


FIG. 4
View from top
of cage

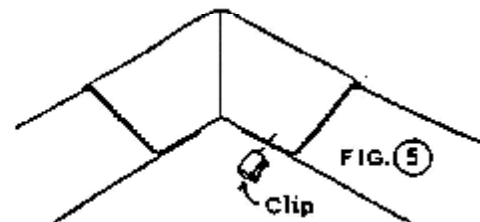


FIG. 5

Note: To disassemble, remove clips and push bottom of side down away from corner, see Fig. 3.